

# Sequoia Hospital Guest House

---



Welcome to the Sequoia Hospital Guest House! Use of the Guest House is provided on a first come-first serve basis and financially supported by the generosity of the Sequoia Hospital Foundation for families in need and those living outside of a 50 mile radius.

The Guest House has 8 private bedrooms consisting of 2 twin beds per room (only 2 guests per room), living room, kitchen, garage, patio and 3 full baths and 1 half bath. The Guest House is equipped with linens and a wireless internet connection and a washer and dryer are provided for guests.

For reservations, questions, or assistance please contact the Guest House at [sequoiaguesthouse@chw.edu](mailto:sequoiaguesthouse@chw.edu) or 650-261-6848.

# Interior Photos of the Guest House

---



**Sitting Room**



**Bedroom**

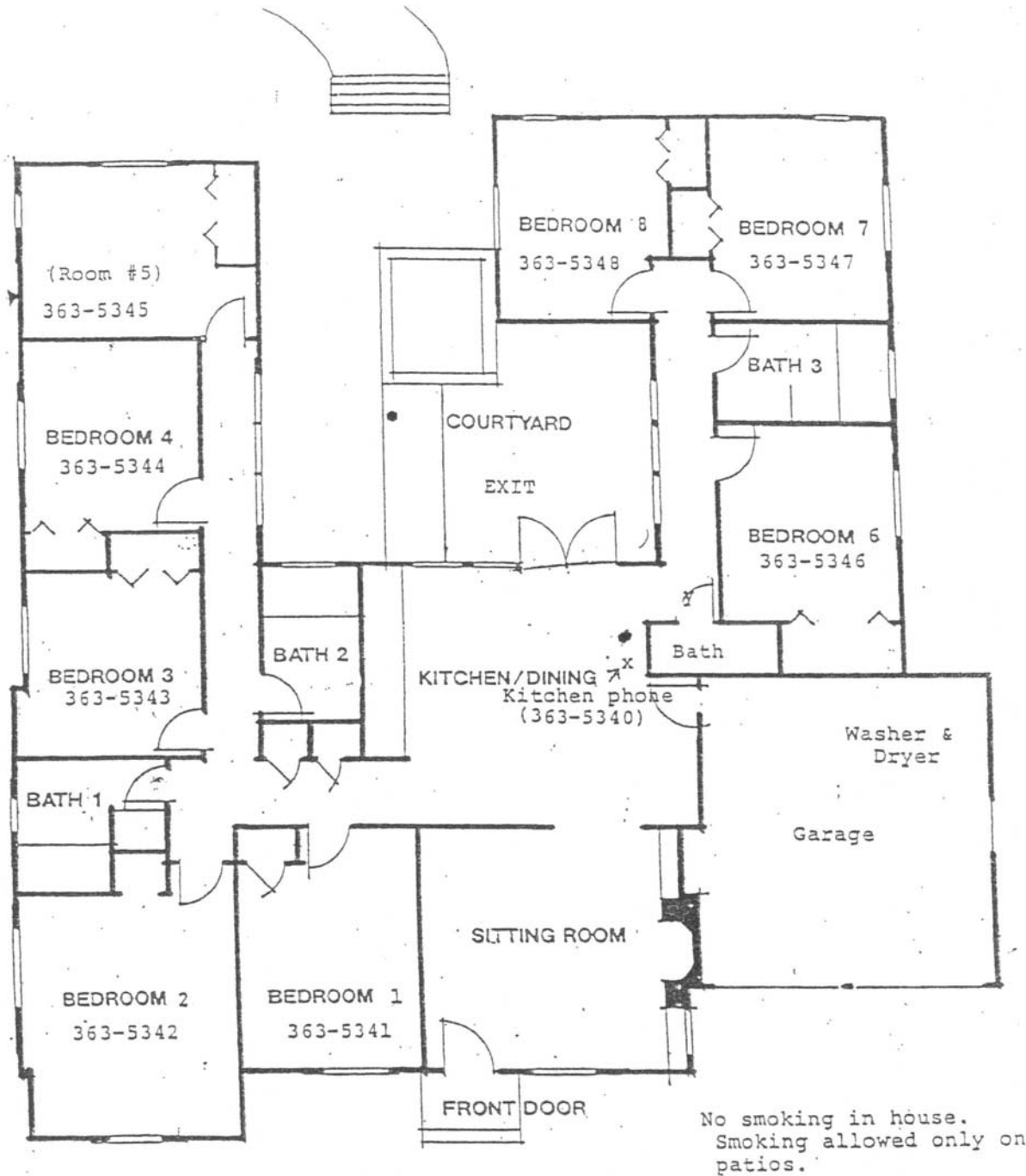


**Kitchen**



**Living Room**

# Guest House Floor Plan





# Guest House Guide

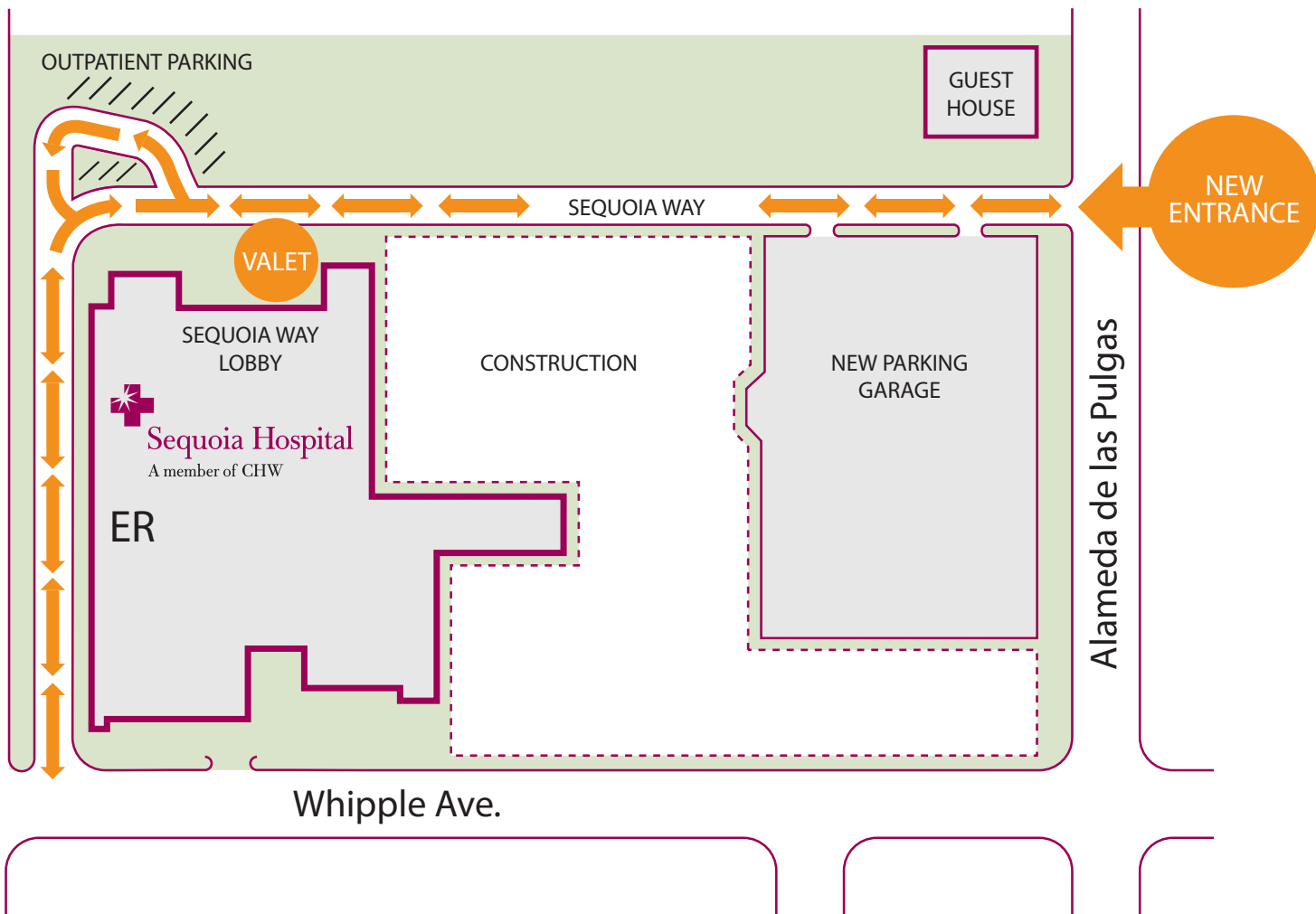
---

- Provided on a first come-first serve basis and financially supported by the generosity of the Sequoia Hospital Foundation for families in need and those living outside of a 50 mile radius.
- 8 private bedrooms consisting of 2 twin beds per room (only 2 guests per room), living room, kitchen, garage, patio and 3 full baths and 1 half bath. **Please note that other families may be staying in the Guest House at the same time you are.**
- **No children under 16** may stay in the guest house.
- **No pets allowed.** Burning candles are not allowed.
- The Guest house is equipped with a wireless internet connection.
- A washer and dryer are provided for guests and located in the garage.
- **No parking allowed in the guest house driveway.** Parking is available on the hospital grounds or free valet parking is also available.
- Access to the hospital shuttle is available by dialing 0 or calling the general hospital number 369-5811. Call 15 minutes prior to when the ride is needed. **All guests must use the Shuttle to and from the hospital.** Guests will be dropped off and picked up in the front of the guest house.
- The guest house is not wheelchair accessible. All guests must be independent with their mobility.
- **No smoking allowed in the house.**
- Check in time is 3pm-4:30pm at the reception desk in the main lobby.
- Check in **after 7pm daily, weekends and holidays is with the Sequoia Operator (PBX)** on duty located in the main lobby.
- A Guest without a reservation checking in after 4:30pm will be assigned a room for one night only.
- Extension requests or drop in guests are handled on a day to day basis. Guests are to contact the reception desk after 9am to request an additional day.
- Check out time by 12noon.
- For reservations, questions, or assistance contact the Guest House at **Sequoiaguesthouse@chw.edu or 650-261-6848.**

# Hospital Construction Traffic Pattern

As our guest, your comfort and safety are very important to us. During construction, please call the main hospital number at (650) 369-5811 and request security to shuttle you to the Sequoia Way lobby.

If you wish to park overnight, please park in the parking garage.



Please contact the Guest House at (650) 261-6848 or the hospital operator at (650) 369-5811 with any questions.

Please visit [www.SequoiaHospital.org](http://www.SequoiaHospital.org) for more information about the rebuilding project or contact Louise Della Maggiora, Sequoia Hospital community liaison at (650) 367-5700 or email [Louise.DellaMaggiora@chw.edu](mailto:Louise.DellaMaggiora@chw.edu).